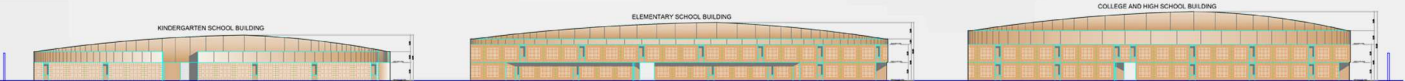
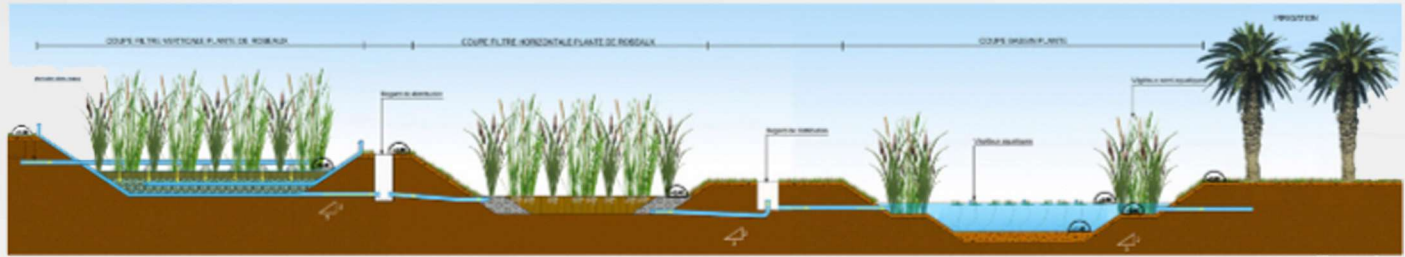
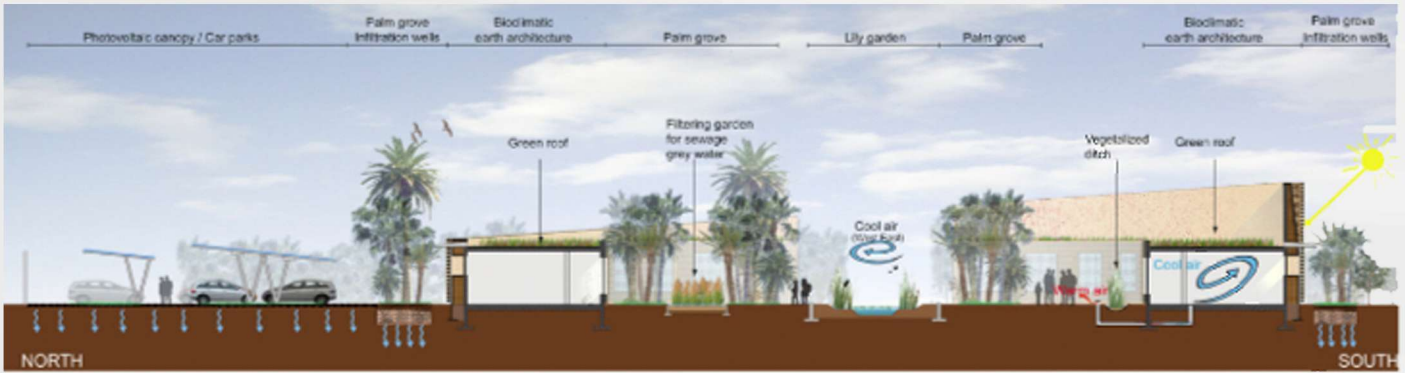




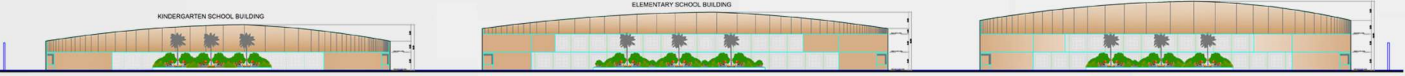
PORTFOLIO

ARCHITECT - ALAIN G. MOUJAES

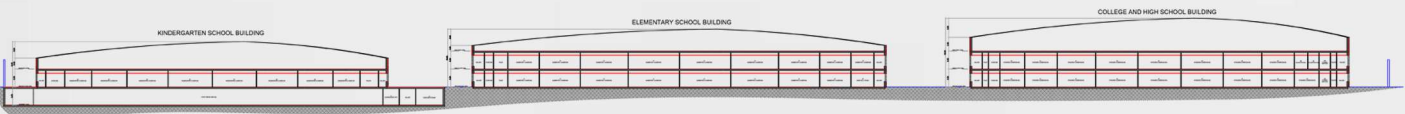
The design concept was to propose circular shaped buildings as “sundials” in the desert. The 3 buildings (Kindergarten, Elementary and College) were constructed with sustainable materials (steel structure isolated with earth insulation). Court wards planted with local endemic plants to cool architecture and outside shaded spaces. Green roof tops to refresh the building during hot weather. Innovative treatment of the sewage water coming out of the buildings, through filtering ponds located outside the buildings. Papyrus plants used to purify water. Clean water then recycled inside of the buildings for sanitary use. “Green dials” a sustainable project of Lycée Bonaparte designed with low impact on the environment. In collaboration with Messrs. ar-architectes, a French bureau specialized in LEED and sustainable architecture.



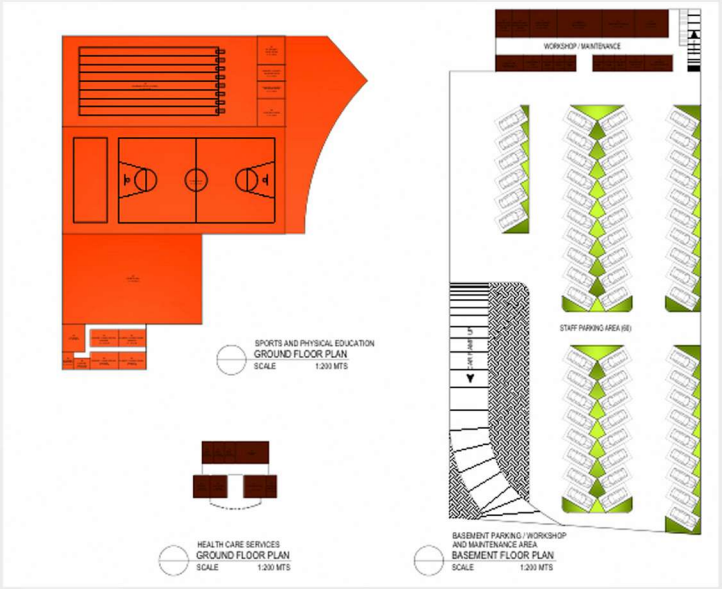
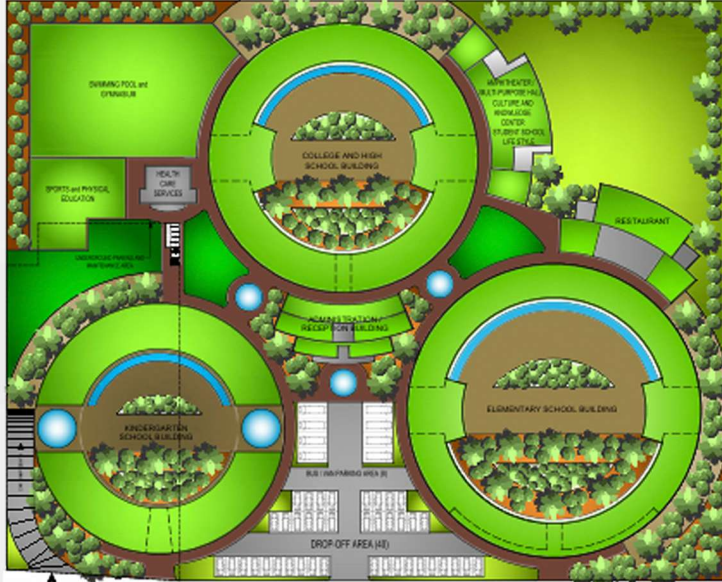
EXTERIOR SITE ELEVATION SCALE 1:400 MTS



ELEVATION THRU YARD AREA SCALE 1:400 MTS



TYPICAL SECTION OF SCHOOL BUILDINGS SCALE 1:400 MTS



ARCHITECT - ALAIN G. MOUJAES

FRENCH SCHOOL COMPETITON-DOHA

The aim of the project is to create an extension to an existing villa located in the high lebanese mountains, and to redevelop the gardens. The new form of the building should be in perfect harmony with the new landscape and both should have their design integrated with the original building.

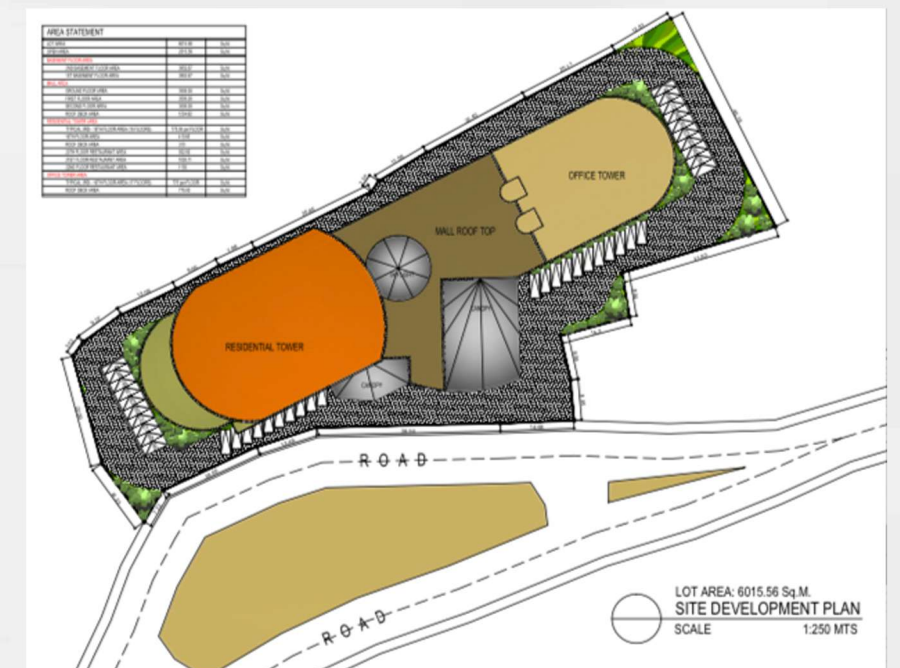
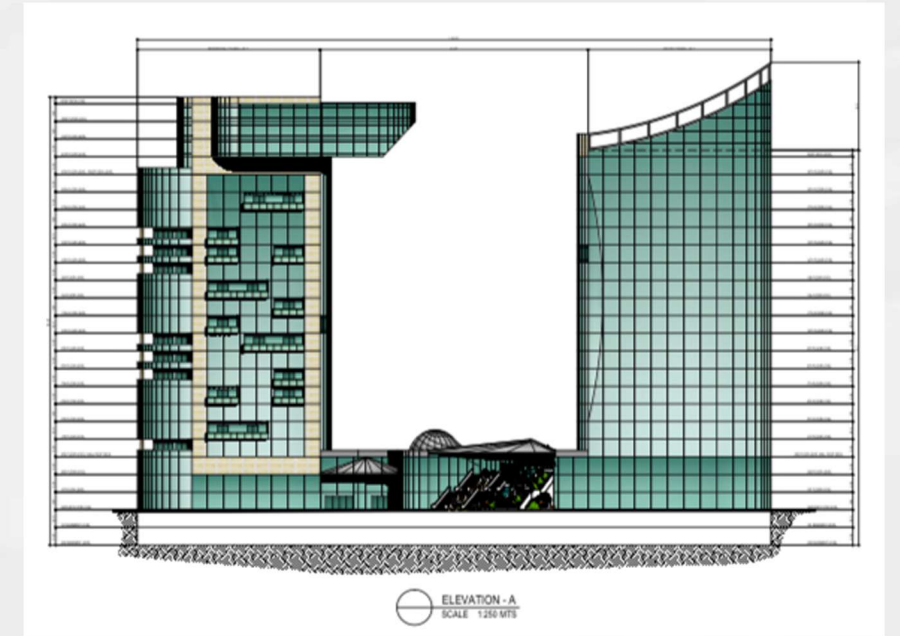


A G M ARCHITECTS



ARCHITECT - ALAIN G. MOUJAES

GHOSTINE RESIDENCE-FAQRA-LEBANON



Designed on a lot area of 6,000 sqm, the two-tower modern building is divided into three different functions: Residential, office, and commercial. The residential tower is linked to the office tower by a multilevel commercial space (mall).

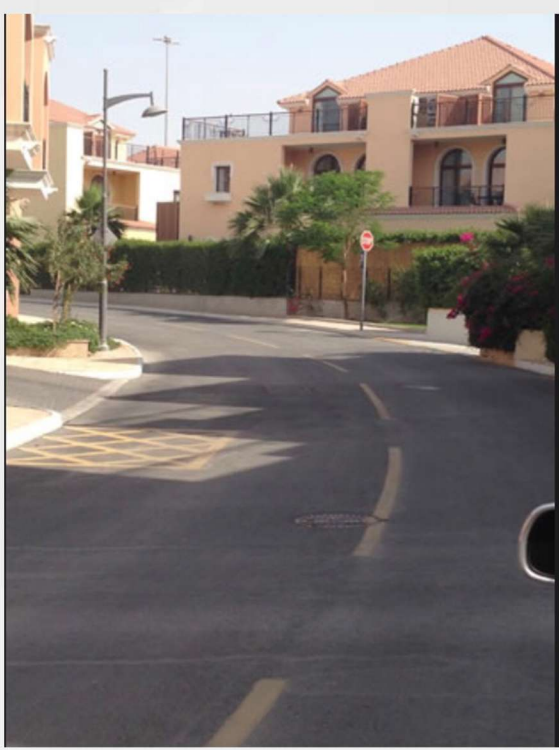


ARCHITECT - ALAIN G. MOUJAES

BIR MOURAD RAIS-ALGIERS

This compound was completed in 2012. Built on a total area of 165,000 sqm land, it includes 383 villas with a substantial private green space for each, along with all required amenities, (club house, kindergarten, shop, etc.). Mediterranean style with pastel colored facades to be in total harmony with its surrounding environment. The main constraint was to provide the expatriates with a fluid, comfortable and sustainable lifestyle.

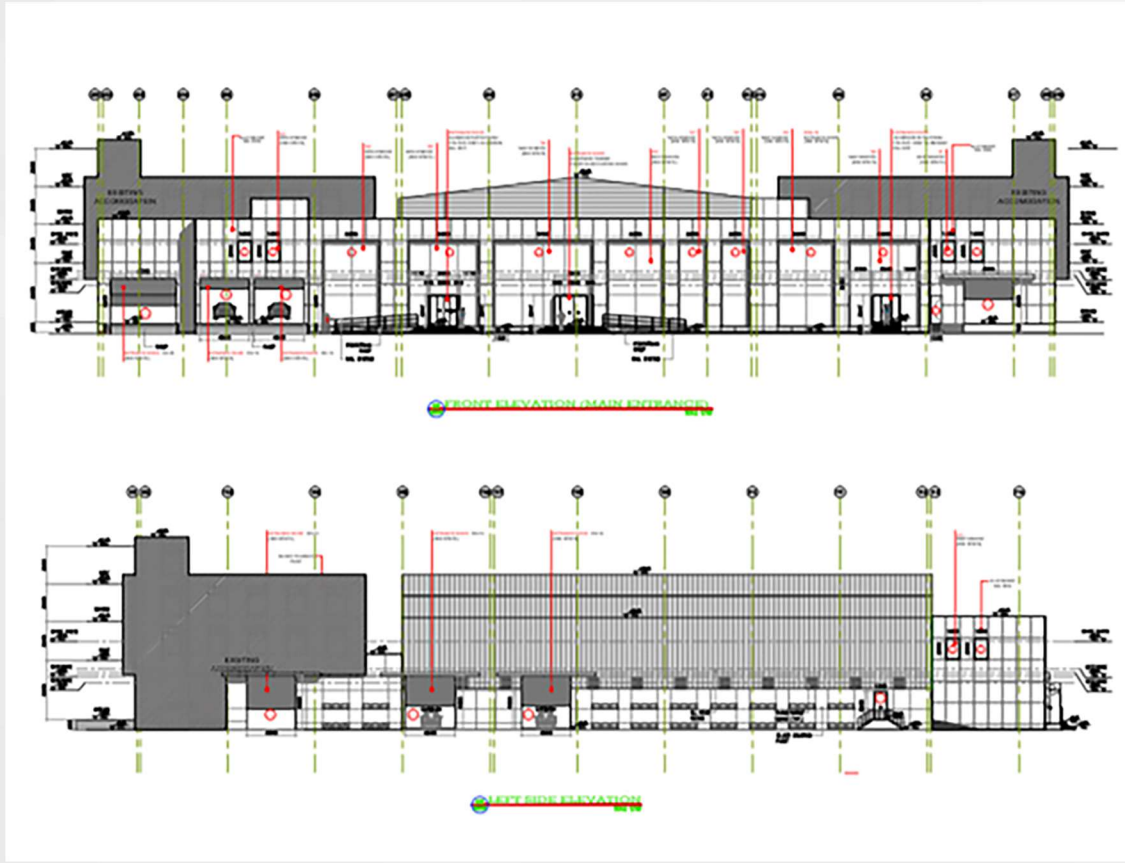
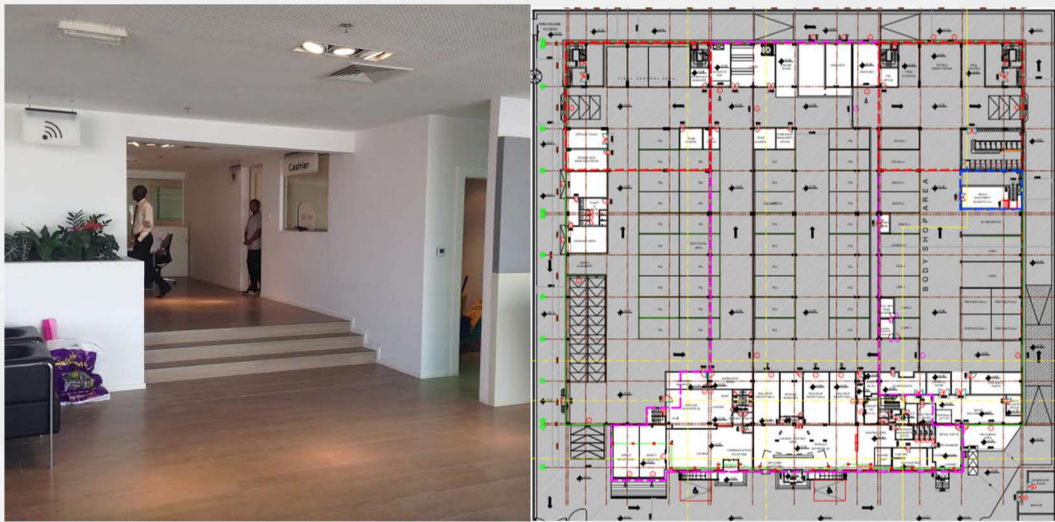
The villas are divided into 4 different types in order to cater for different requirement ranges on the one hand, and to avoid a monotonous and repetitive architecture on the other. Awarded in 2013.



ARCHITECT - ALAIN G. MOUJAES

AL RAYYAN VILLAGE COMPOUND-DOHA

Rehabilitating existing buildings into a showroom and workshop, taking into consideration the corporate identity of the two prestigious brands along with their complete requirements.



ARCHITECT - ALAIN G. MOUJAES

AUDI VW SHOWROOM AND WORKSHOP-DOHA

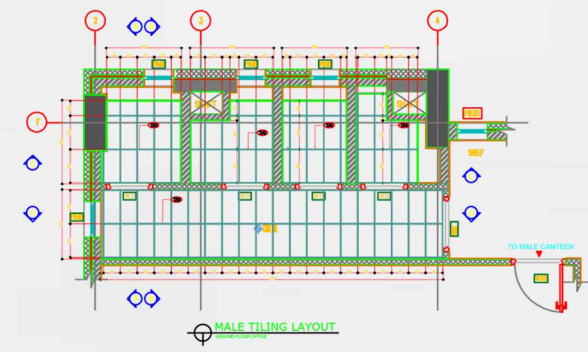
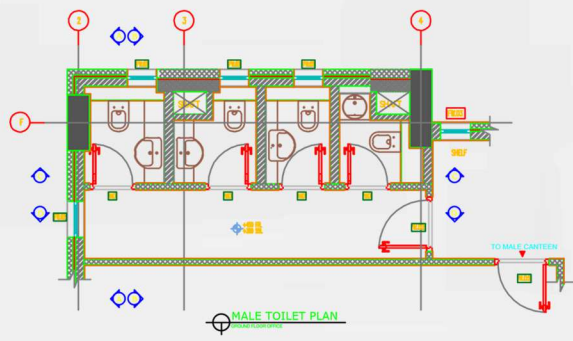
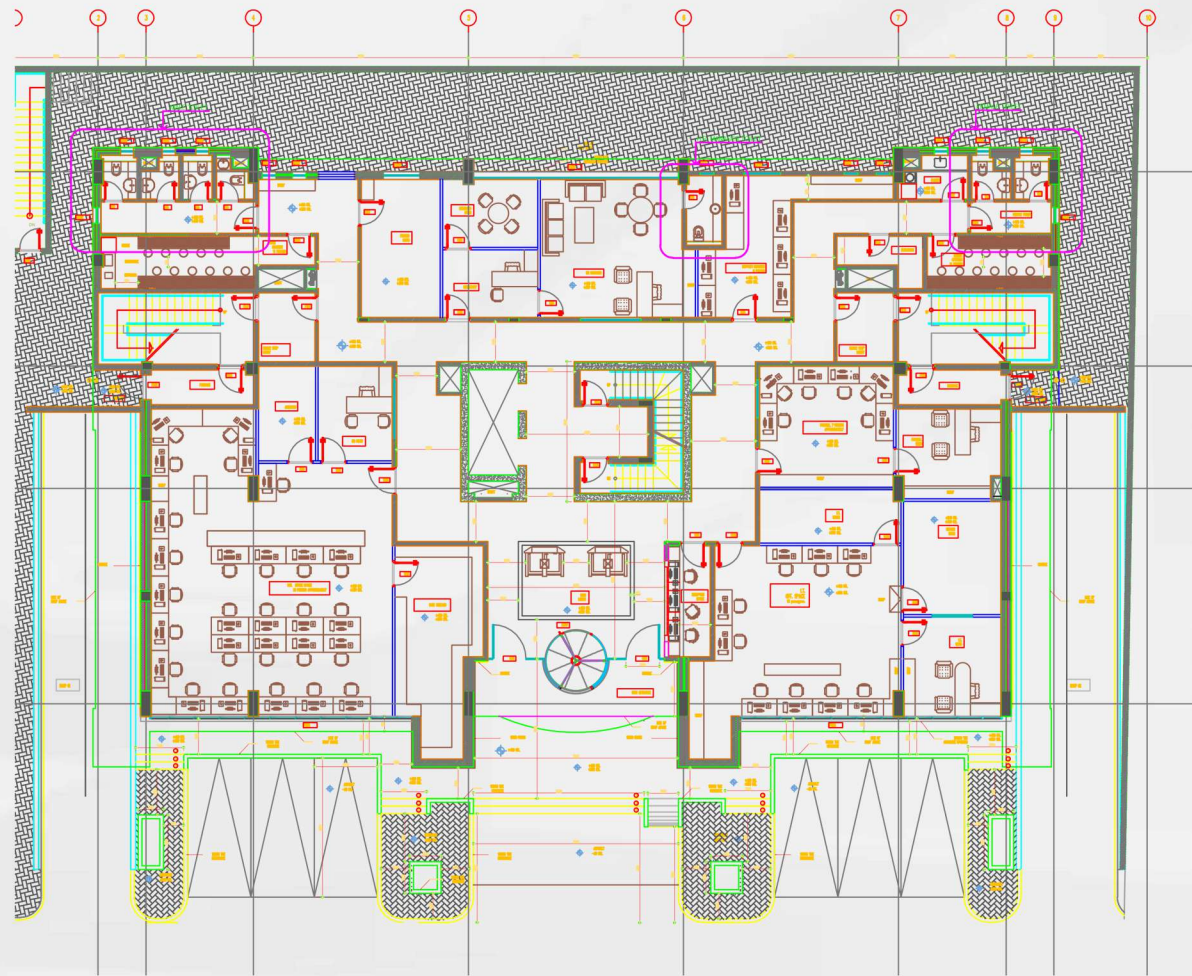


The constraint was to create modern and functional office spaces on an already existing concrete skeleton. The external aspect and the interior spaces were to keep an image which highlights the company standards and its professionalism.

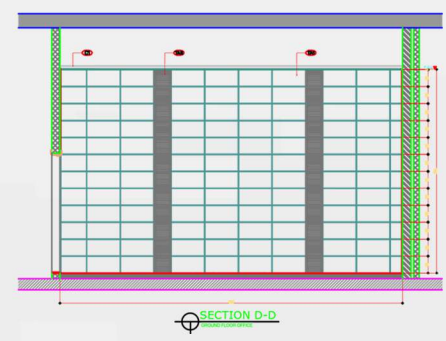
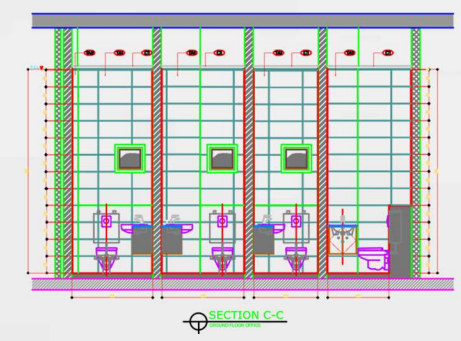
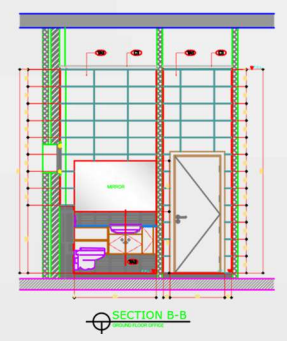
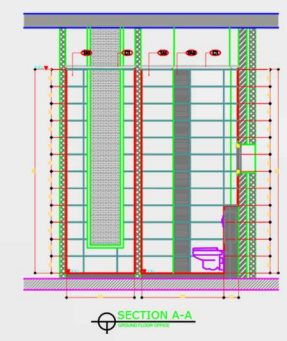


ARCHITECT - ALAIN G. MOUJAES

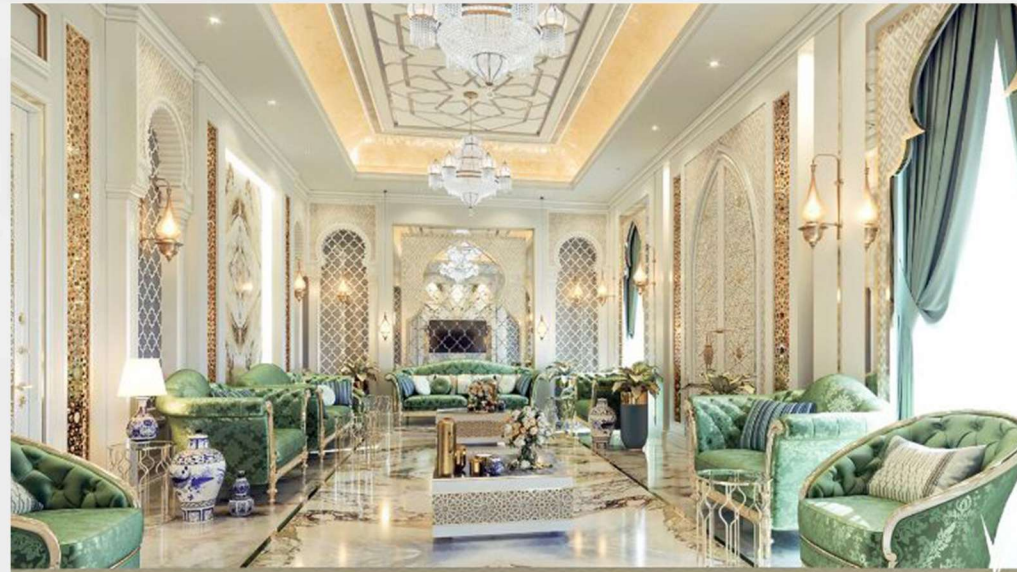
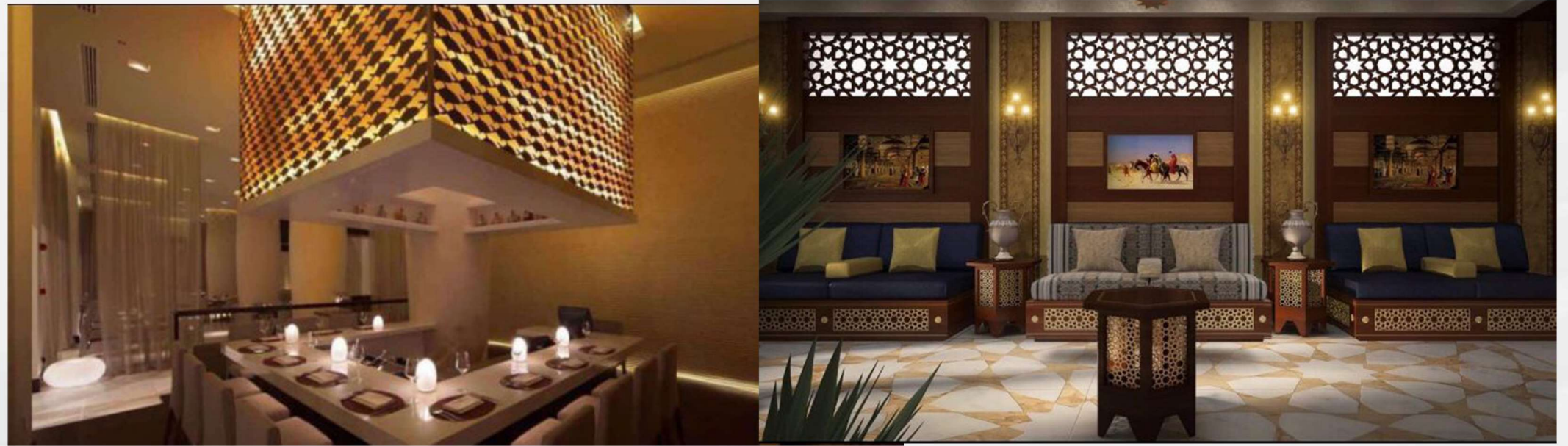
BOOM CONTRACTORS HEAD OFFICE- DOHA 1/2



LIST OF FINISHES	
CEILING	CEILING GYPSUM BOARD (Finishes to be specified by Client/Architect)
101	CERAMIC STONES - ALTAJ 007508 BROWN 30cm x 60cm NATURAL COLORBODY PORCELAIN STONEWARE
102	CERAMIC STONES - ALTAJ 005000 MOSAICO MIX FREDDO 30cm x 30cm COLORBODY PORCELAIN STONEWARE
103	CERAMIC STONES - ALTAJ 007508 BEIGE 30cm x 60cm NATURAL COLORBODY PORCELAIN STONEWARE
104	CERAMIC STONES - ALTAJ 005008 MOSAICO MIX CALDO 30cm x 30cm COLORBODY PORCELAIN STONEWARE
105	CERAMIC STONES - INDAH SILK 005016 COCO 60.0cm x 60.0cm COLORBODY PORCELAIN STONEWARE
106	CERAMIC STONES - INDAH SILK 005022 COCO 29.0cm x 29.0cm COLORBODY PORCELAIN STONEWARE
107	CERAMIC STONES - INDAH SILK 005014 MOSAICO DESIGN CH/CO/ANG 29.0cm x 29.0cm COLORBODY PORCELAIN STONEWARE
108	CERAMIC STONES - INDAH SILK 005001 CARMELLA 60.0cm x 60.0cm COLORBODY PORCELAIN STONEWARE
109	CERAMIC STONES - INDAH SILK 005021 CARMELLA 29.0cm x 29.0cm COLORBODY PORCELAIN STONEWARE



ARCHITECT - ALAIN G. MOUJAES

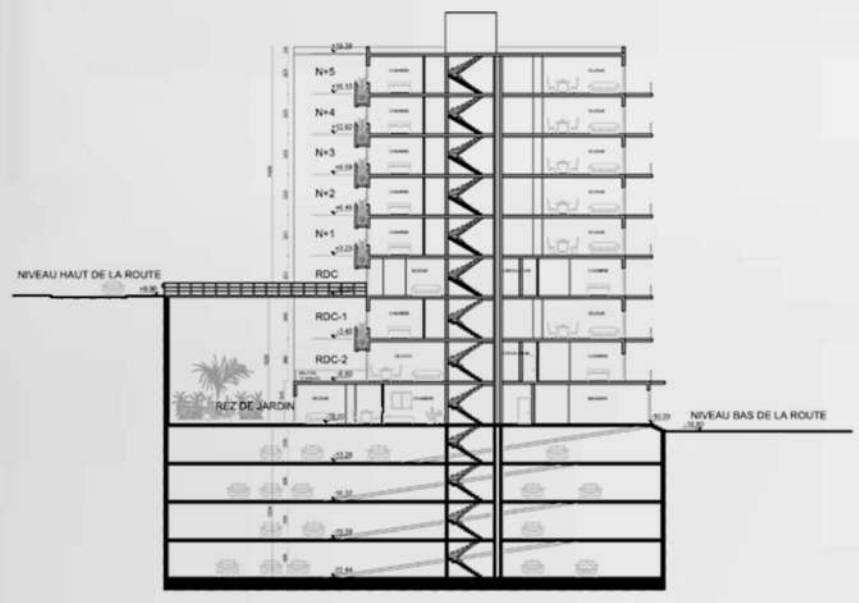


In Collaboration with
Il Portico Interiors

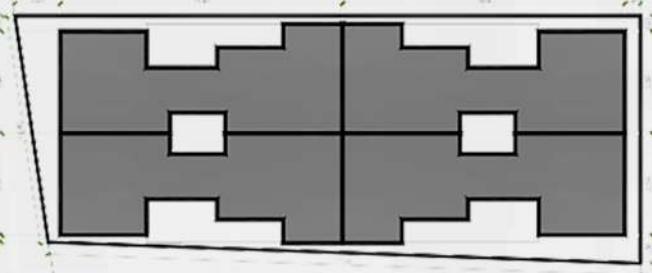


ARCHITECT - ALAIN G. MOUJAES

Conceived on a sloped and tiny land overlooking "La baie d'Alger" on one side, this multi-storey building aimed at providing comfortable modern residential spaces in a land only aerated from two opposite sides.



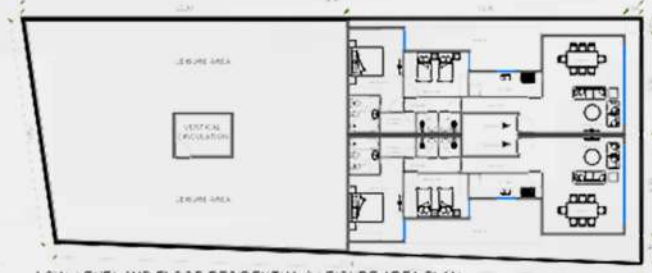
TYPICAL FLOOR PLAN
SCALE 1:40 MTS



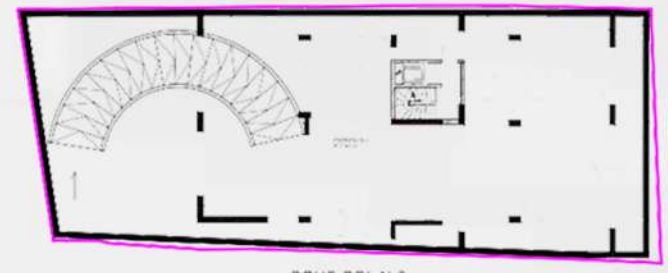
SITE DEVELOPMENT PLAN
SCALE 1:50 MTS



LOW LEVEL 1ST FLOOR RESIDENTIAL / TECHNICAL & STORE AREA PLAN
SCALE 1:50 MTS



LOW LEVEL 2ND FLOOR RESIDENTIAL & LEISURE AREA PLAN
SCALE 1:50 MTS



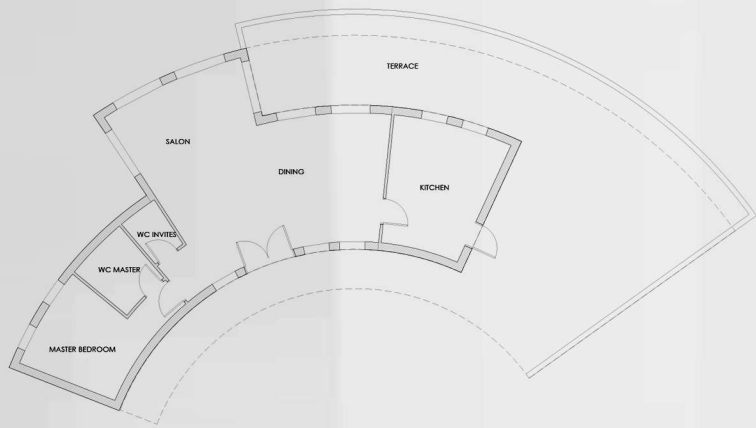
SOUS-SOL N-3



SOUS-SOL N-1

ARCHITECT - ALAIN G. MOUJAES

ALGERIA GOLF PROJECT

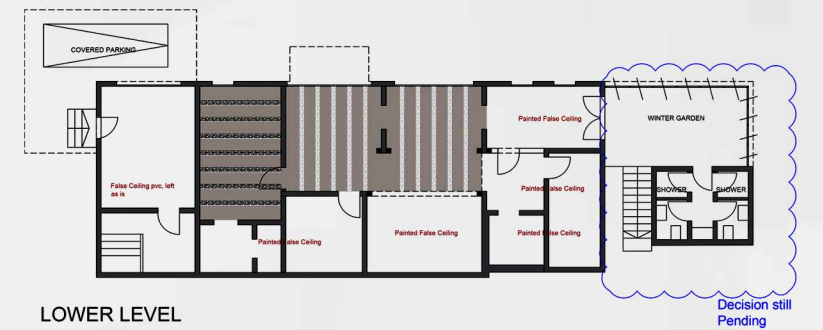


Fluid design for a private secondary residence as to provide comfort and serenity to a middle-aged couple, far from the noisy environment.

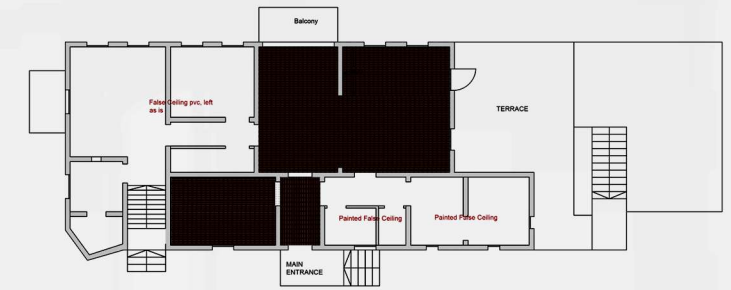


ARCHITECT - ALAIN G. MOUJAES

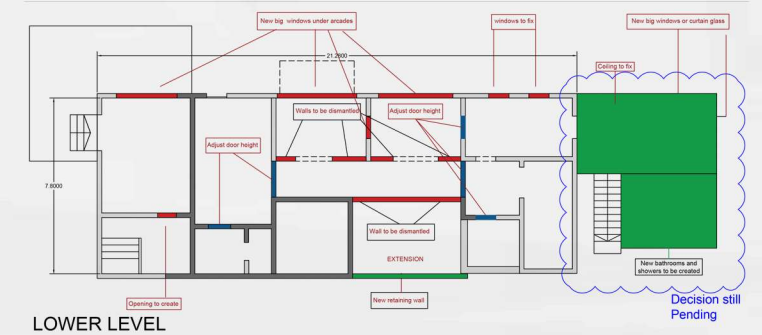
PRIVATE RESIDENCE BY THE SEA-LEBANON



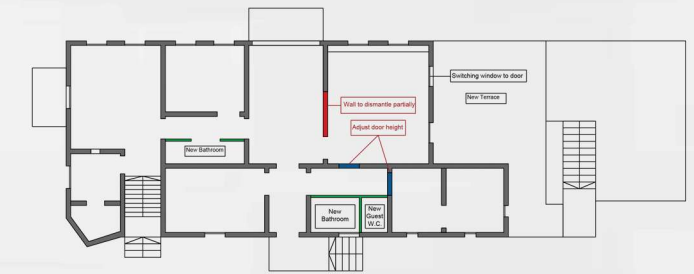
LOWER LEVEL



UPPER LEVEL



LOWER LEVEL



UPPER LEVEL

The constraint of this renovation project was to add an extension and create modern lifestyle spaces adapted to an existing old structure. The external aspect was to be in harmony with its rustic environment.

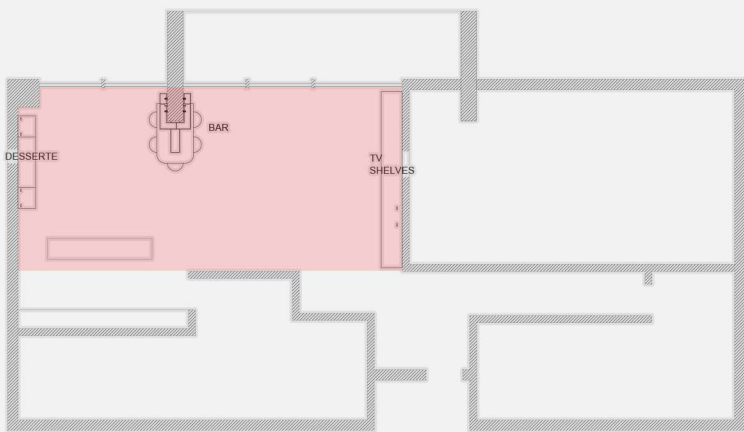


ARCHITECT - ALAIN G. MOUJAES

RESIDENCE BEIT CHABEB- MOUNT LEBANON

Custom Furniture Design
Bar area, Tv unit and Buffet

Dubai Residence

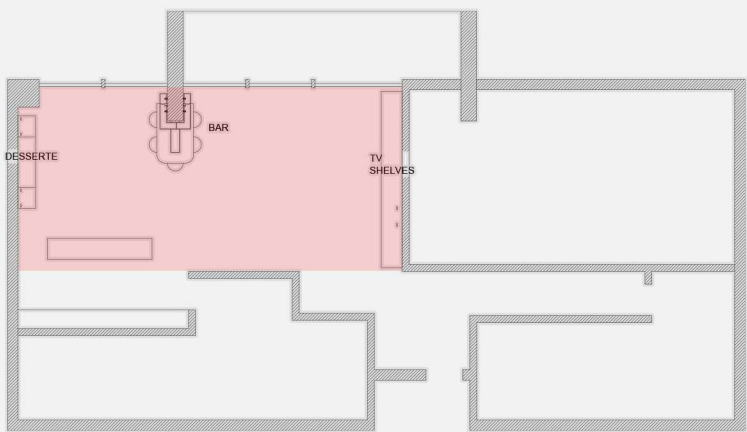


ARCHITECT - ALAIN G. MOUJAES

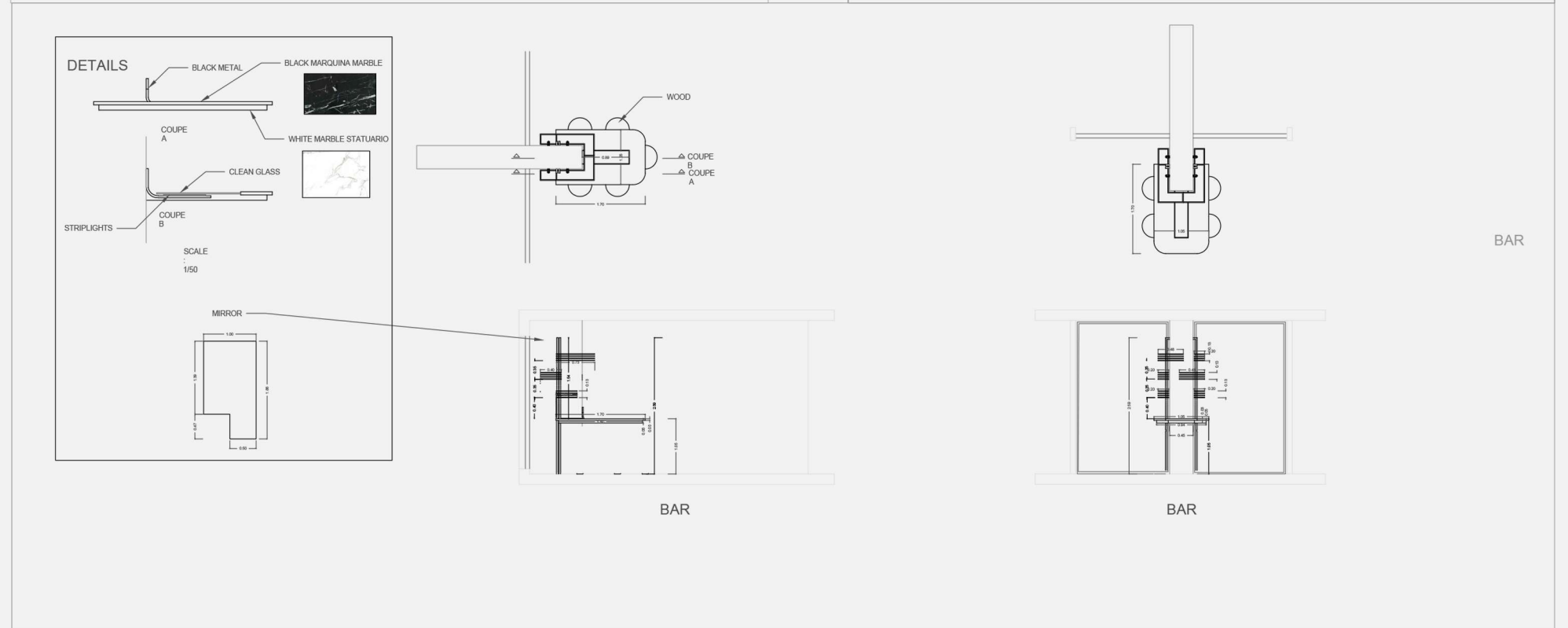
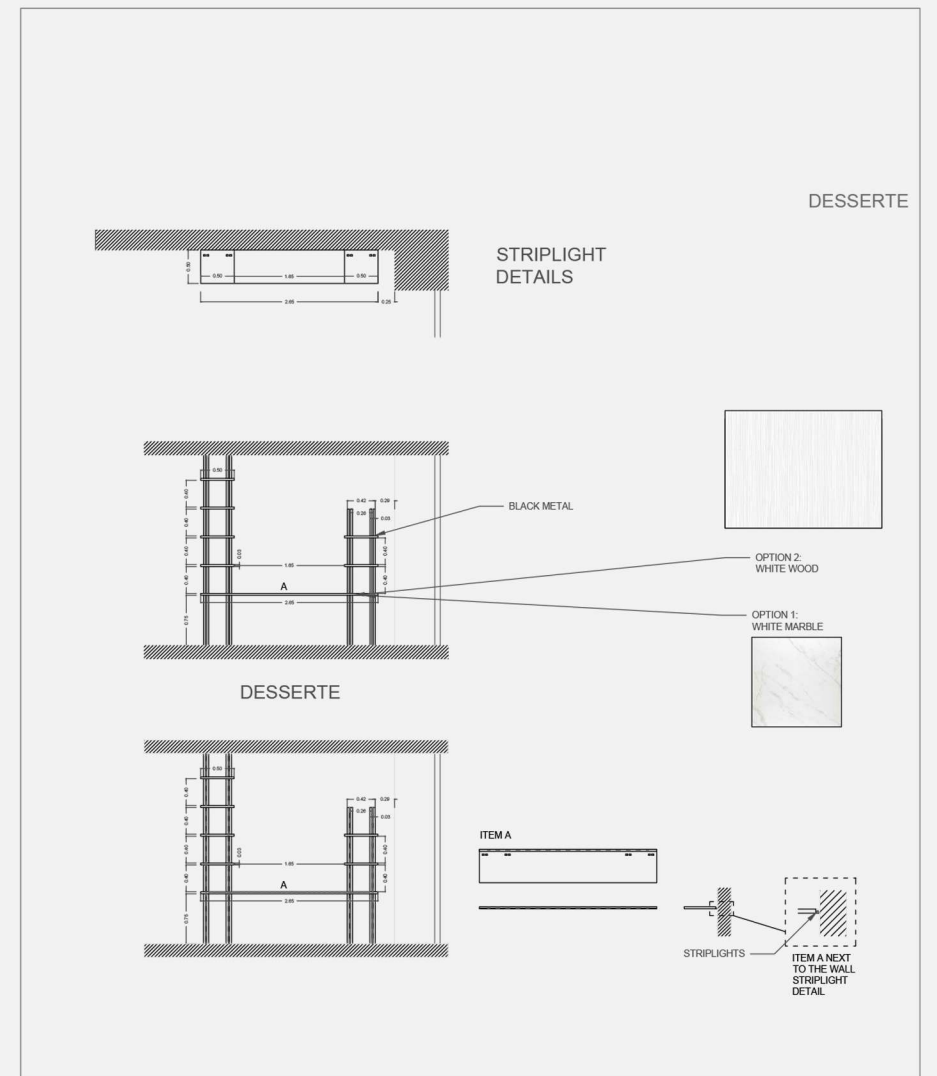
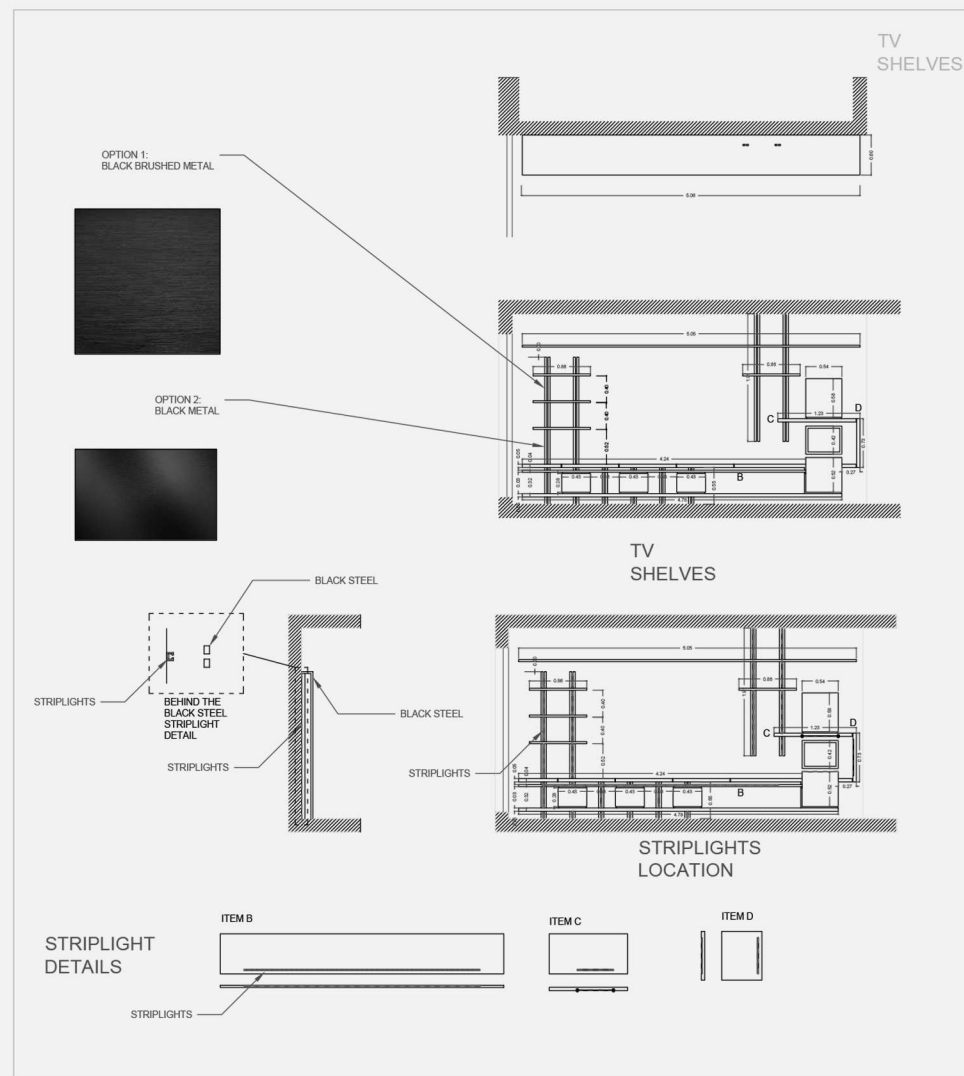
DUBAI APARTMENT -1-

Custom Furniture Design
Bar area, Tv unit and Buffet

Dubai Residence



ARCHITECT - ALAIN G. MOUJAES



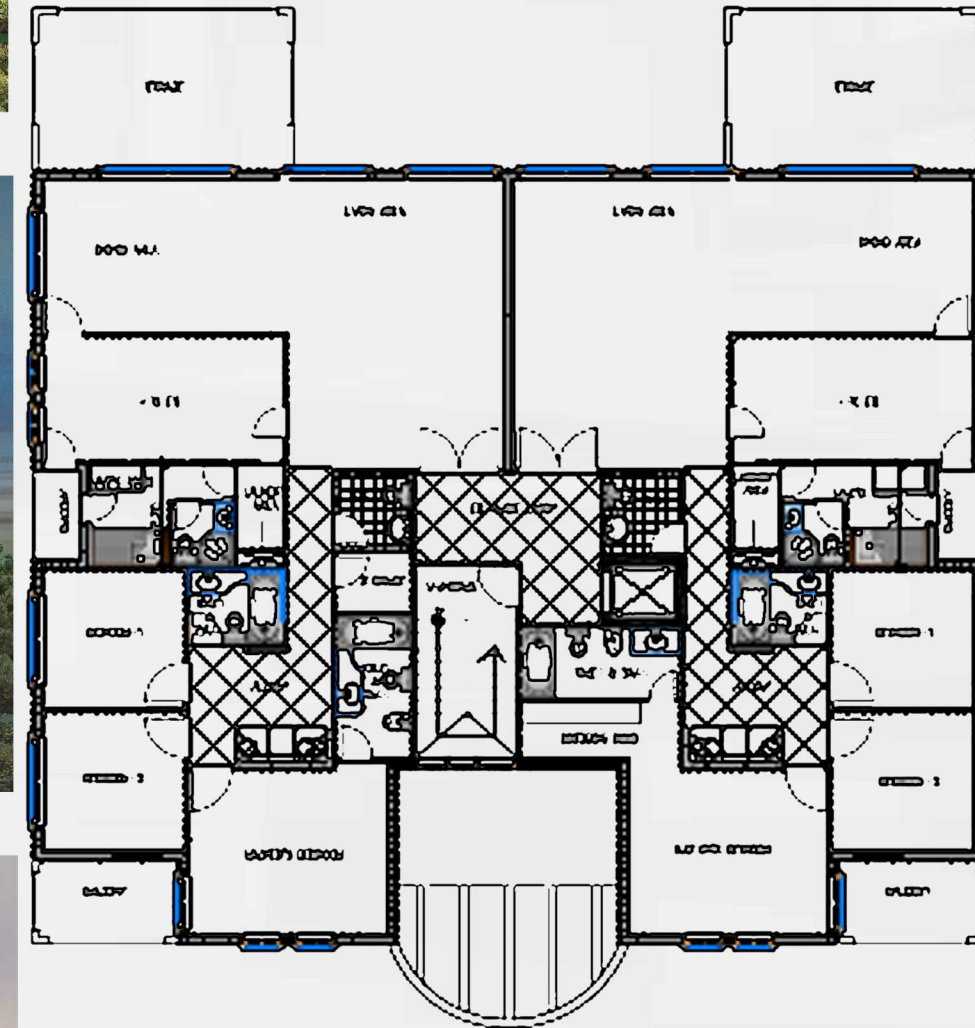


Elegant and prestigious design
combining modern and traditional
styles.



ARCHITECT - ALAIN G. MOUJAES

PRIVATE RESIDENCE - DOHA



FIRST FLOOR PLAN
SCALE 1:100/673

Conceived on a sloped land overlooking the east Lebanese valley, this multi-storey building aimed at providing comfortable modern residential spaces in a narrow land endowed with open views from all sides

ARCHITECT - ALAIN G. MOUJAES

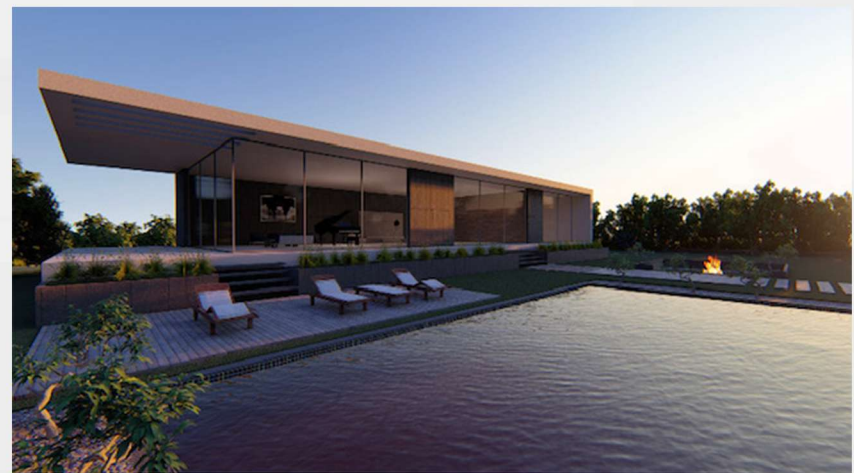
BAABDAT RESIDENTIAL BUILDING- LEBANON

A 14 luxurious villa compound designed to provide Lebanese expatriates with a home in their native country. Traditional architecture, development plan designed with the purpose of creating a “community life”, while respecting the privacy of each villa and providing it with an open view.



ARCHITECT - ALAIN G. MOUJAES

SAIDA COMPOUND-LEBANON



A residence with a 650 sqm footprint integrated in a 15,000 sqm private domain, with all required amenities as to allow occasional wedding venues. Elegant and simple design.



ARCHITECT - ALAIN G. MOUJAES

PRIVATE DOMAINE ZAHLE- LEBANON 1/2



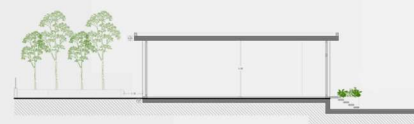
West Elevation



East Elevation



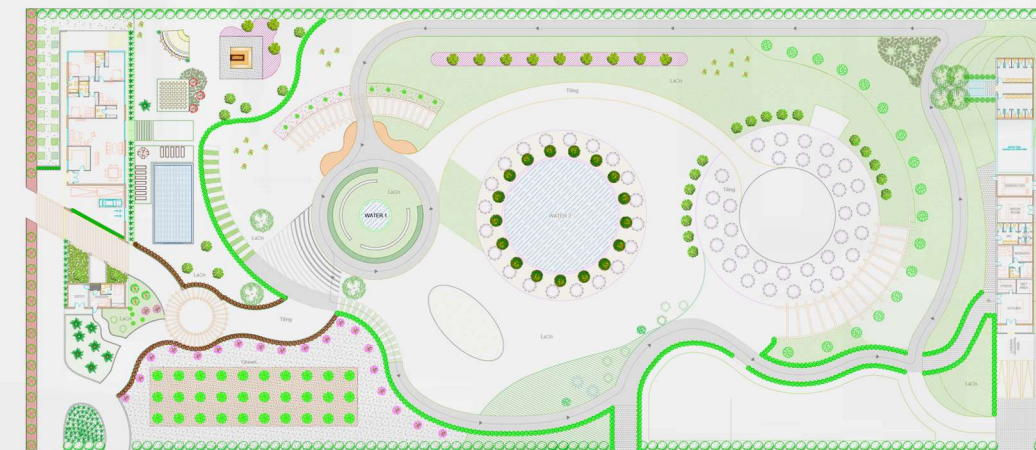
Longitudinal Section



Transverse Section



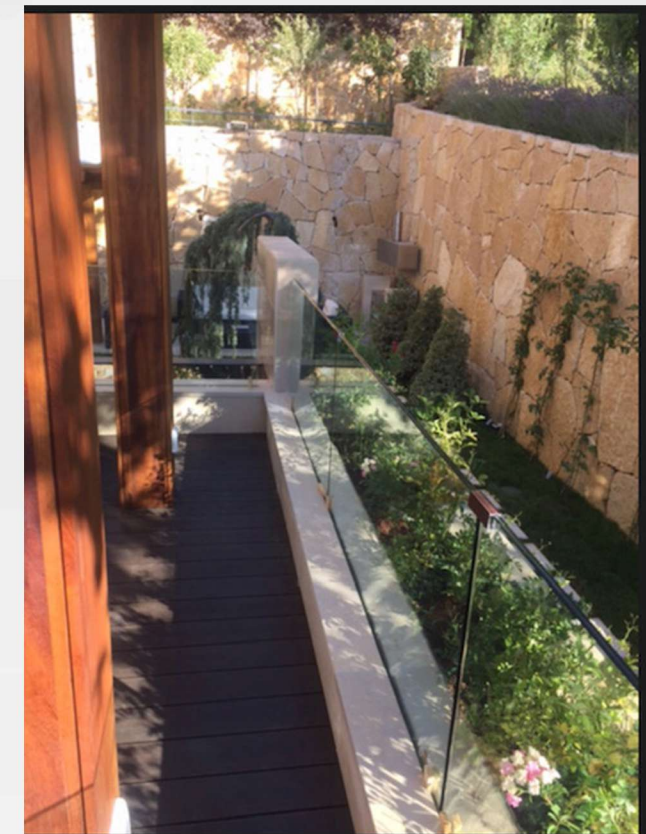
Service building- SECTION AA - TALUS



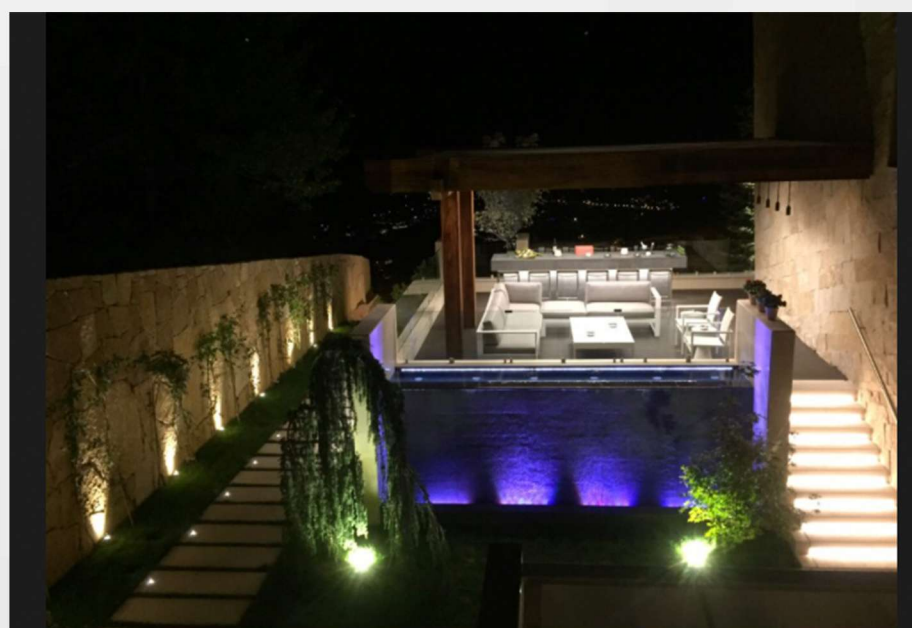
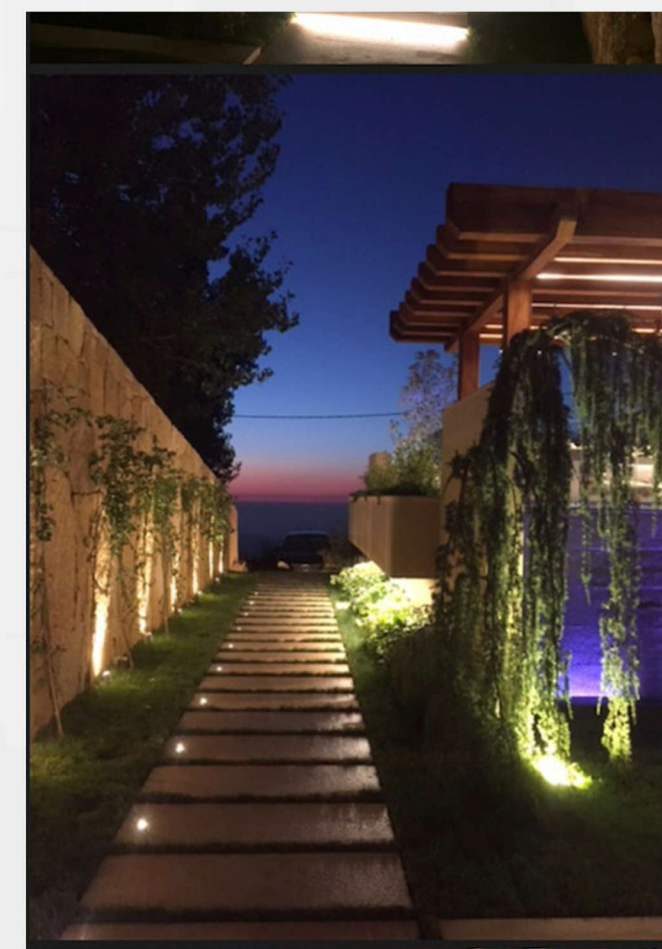
Service building- SECTION BB - TALUS



ARCHITECT - ALAIN G. MOUJAES



A landscape design combining luxury, elegance and serenity with a touch of freshness provided by the fountain linking the two levels.



ARCHITECT - ALAIN G. MOUJAES

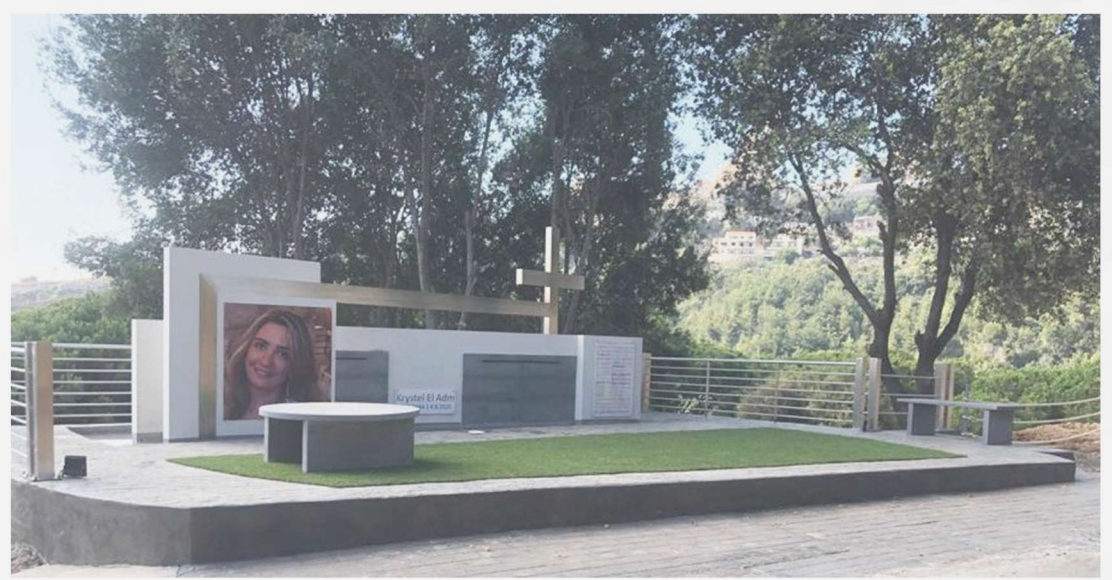
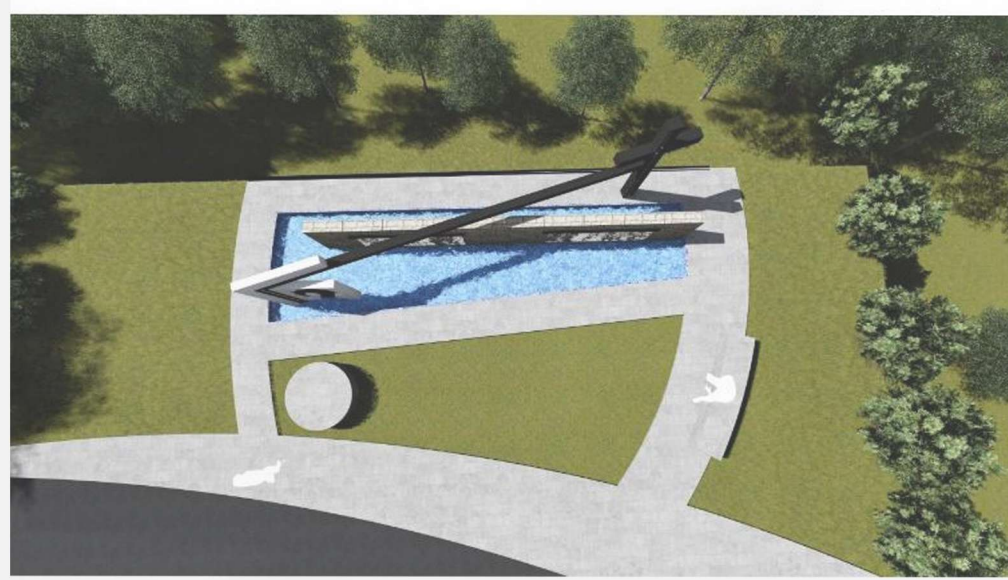
PRIVATE CHALET GARDEN-FAQRA LEBANON



ARCHITECT - ALAIN G. MOUJAES

NBK HEAVY EQUIPMENTS-DOHA

This Memorial is dedicated to one of the victims of the August 2020 Lebanese port blast. Symbolizing Krystel's new life, this work is thought and intended to become a serene place for meditation.



ARCHITECT - ALAIN G. MOUJAES

MEMORIAL KRYPEL AL ADM-DAROUN LEBANON

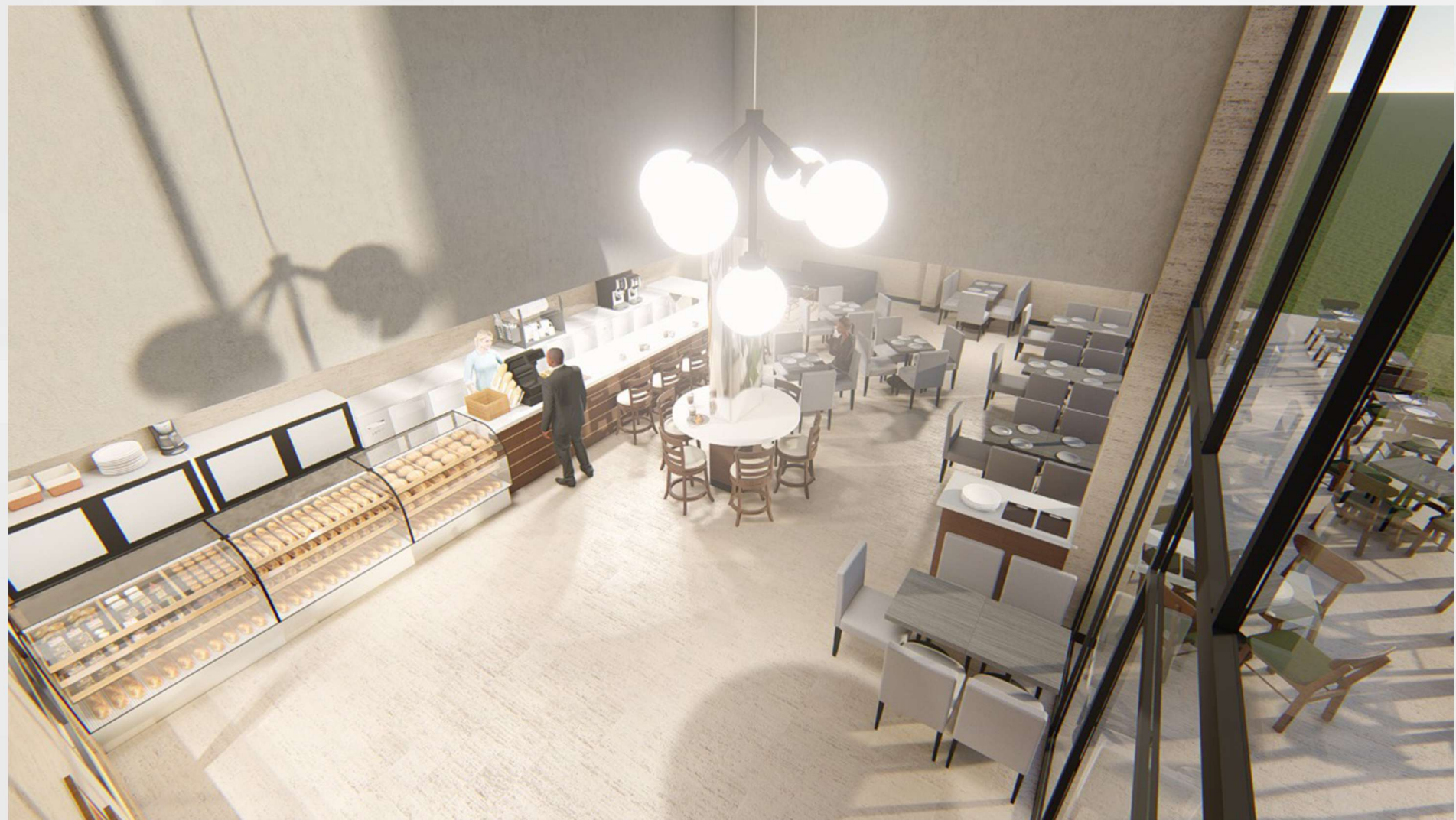


ARCHITECT - ALAIN G. MOUJAES

PRIVATE GARDEN AND PARKING- SAIDA



French embassy cafe
Beirut



ARCHITECT - ALAIN G. MOUJAES

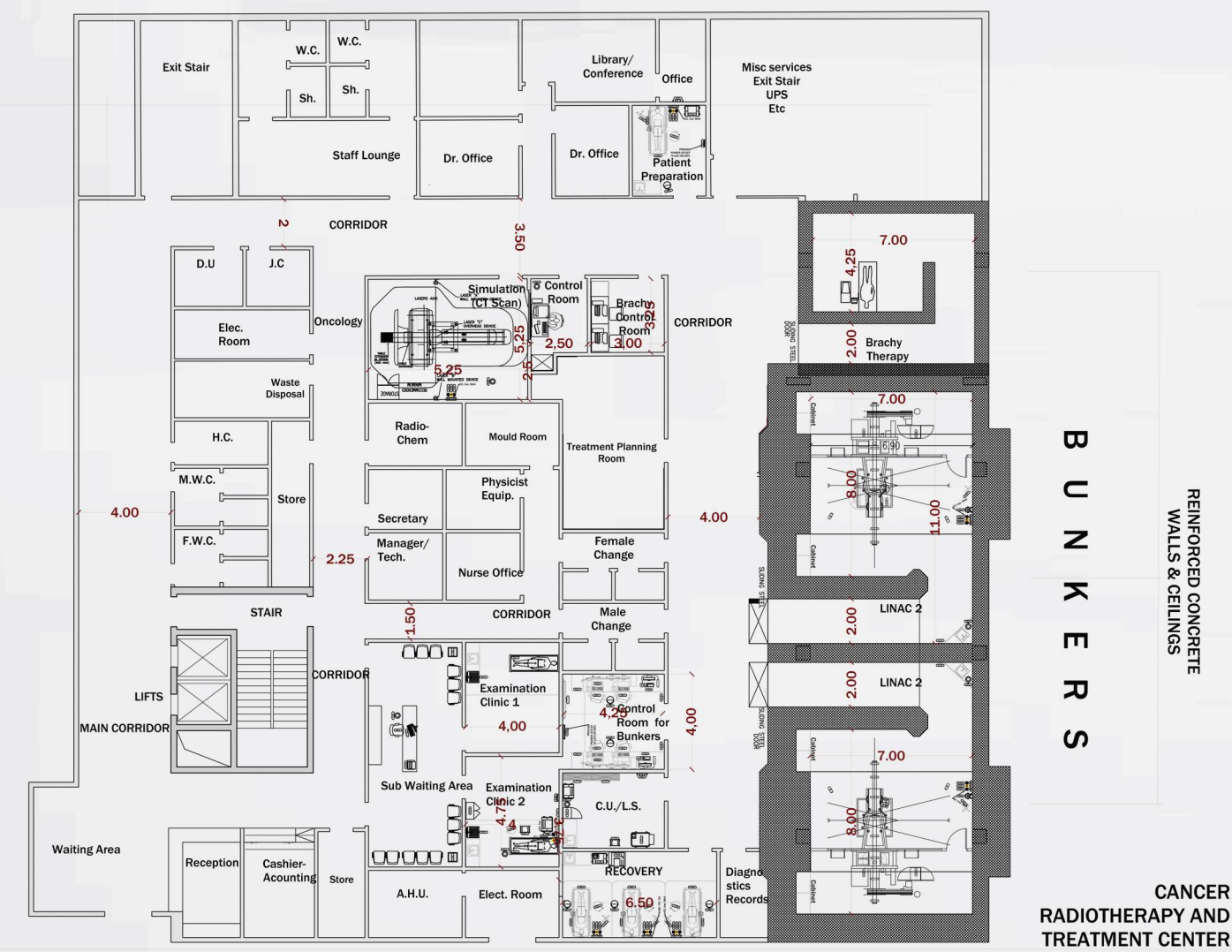
CDL-LEBANON



ARCHITECT - ALAIN G. MOUJAES

ITALIAN RESTAURANT-BEIRUT

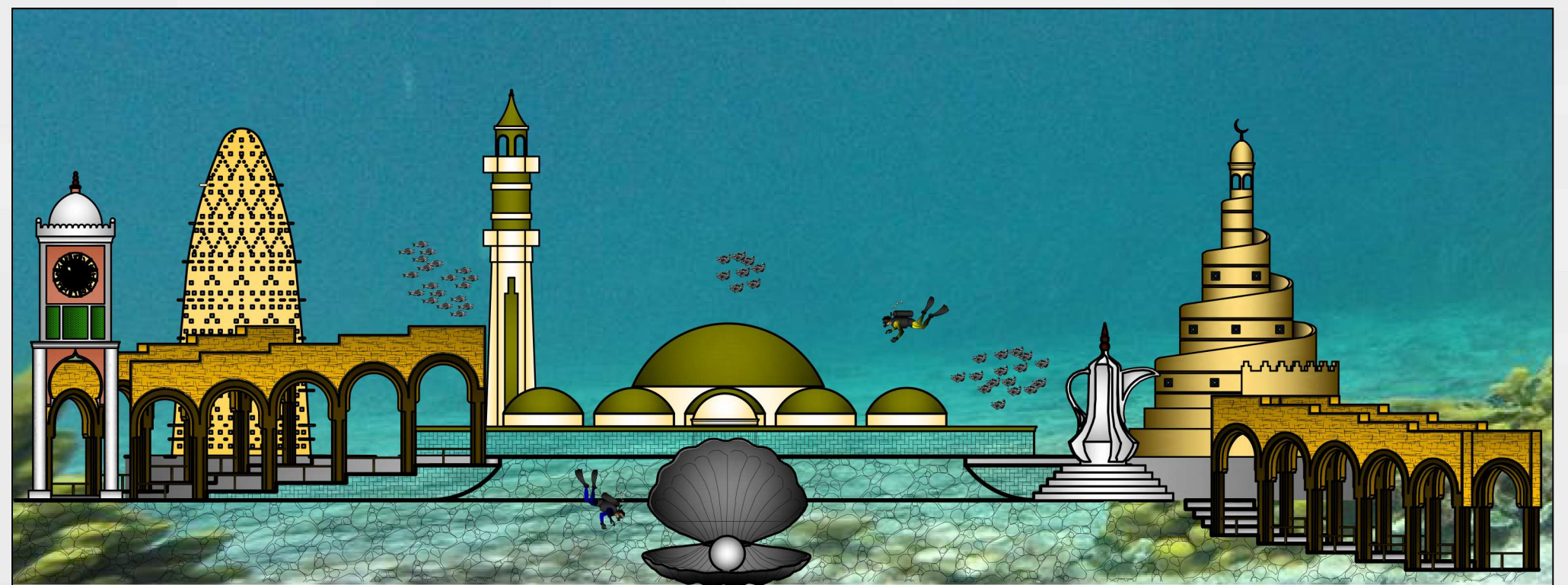
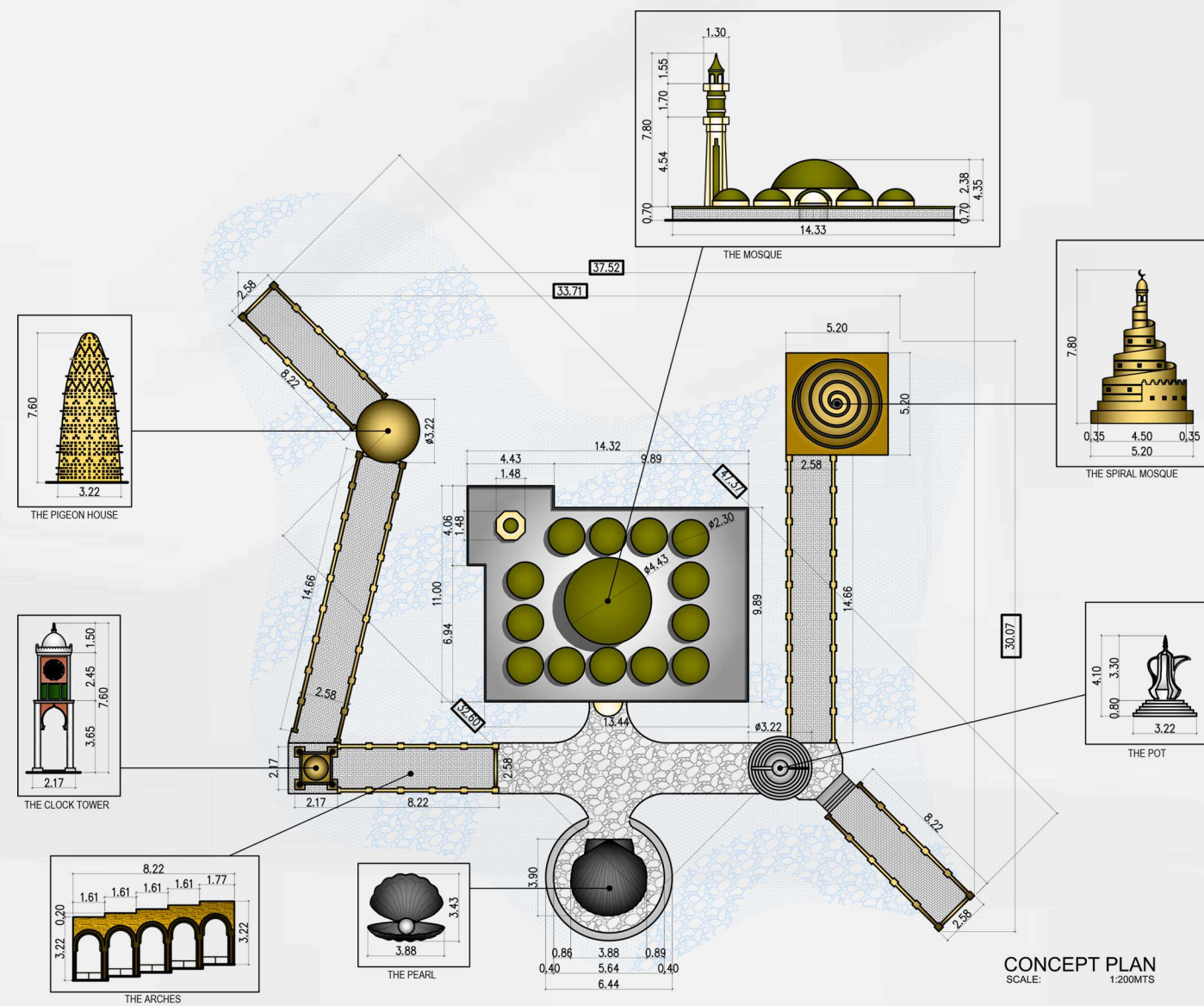
In collaboration with Messrs. Mebex Consultants, healthcare specialists, the design of a hospital in Sierra Leone



ARCHITECT - ALAIN G. MOUJAES

HEALTH CARE PLANNING

Underwater monument proposal
for the Qatari ministry of environment



ELEVATION
SCALE: 1:200MTS



ARCHITECT - ALAIN G. MOUJAES

MONUMENTS-DOHA

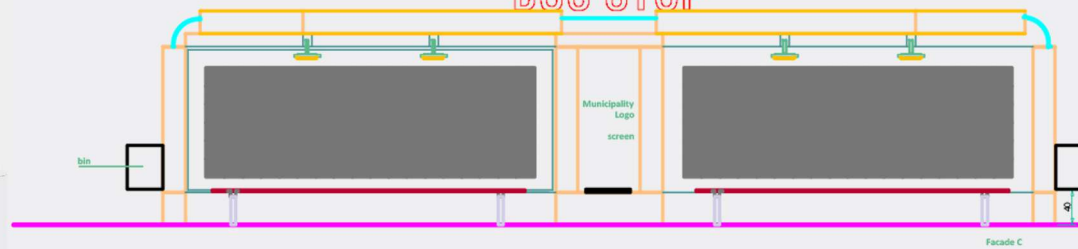
BUS STOP



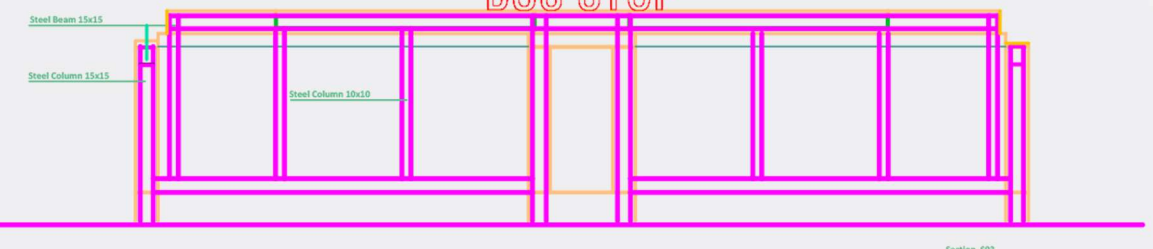
BUS STOP



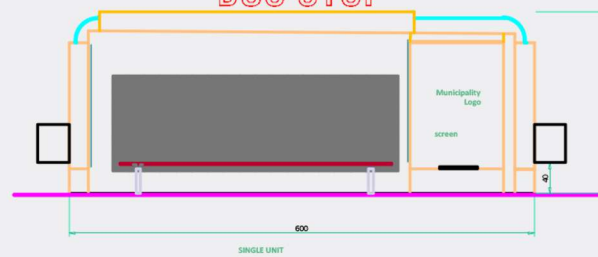
BUS STOP



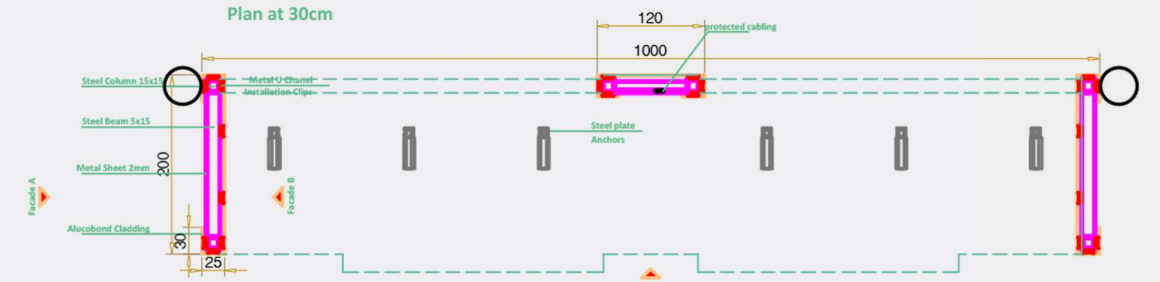
BUS STOP



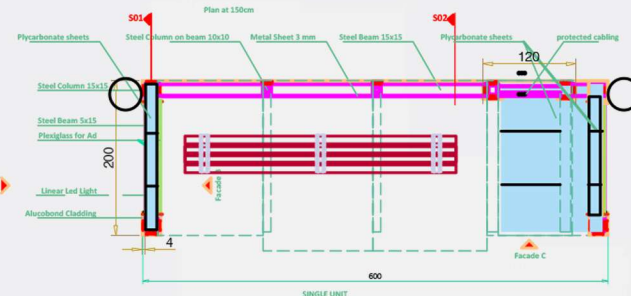
BUS STOP



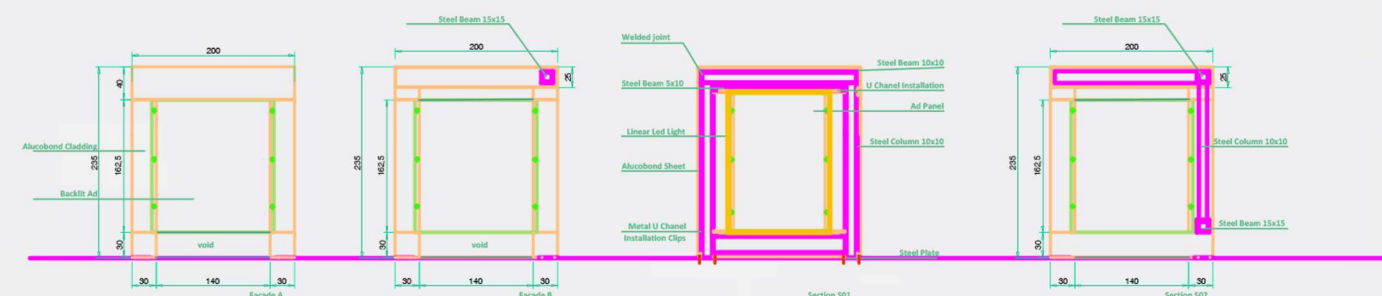
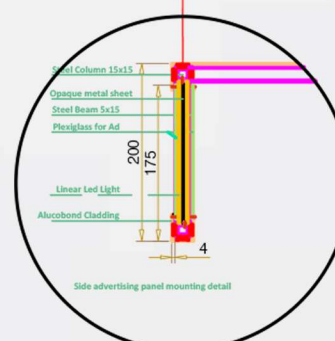
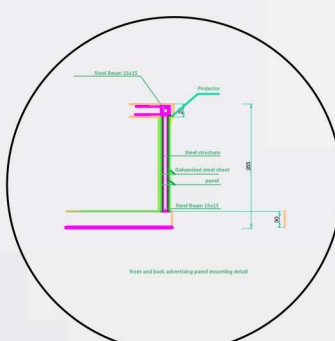
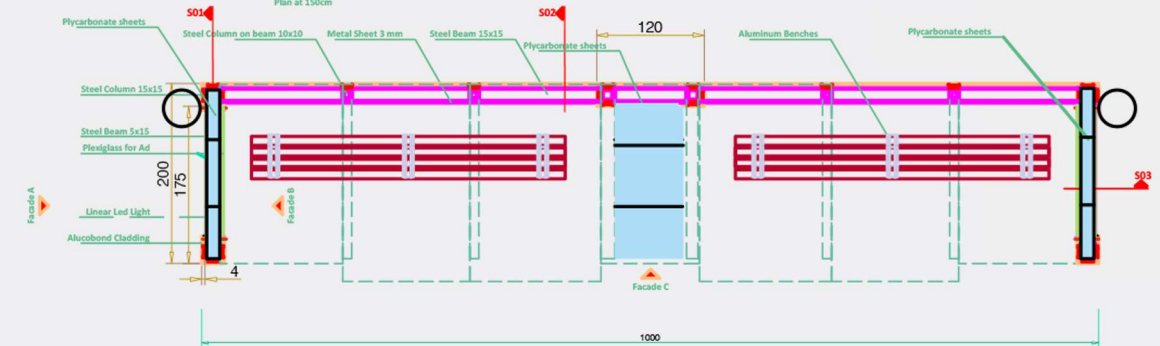
Plan at 30cm



BUS STOP



Plan at 150cm



BUS SHELTER DESIGN - OUGANDA

Prototype for 50 units to be executed. The shelter includes billboards and small console for mobile recharging, while keeping a light and welcoming appearance.

AGM ARCHITECT



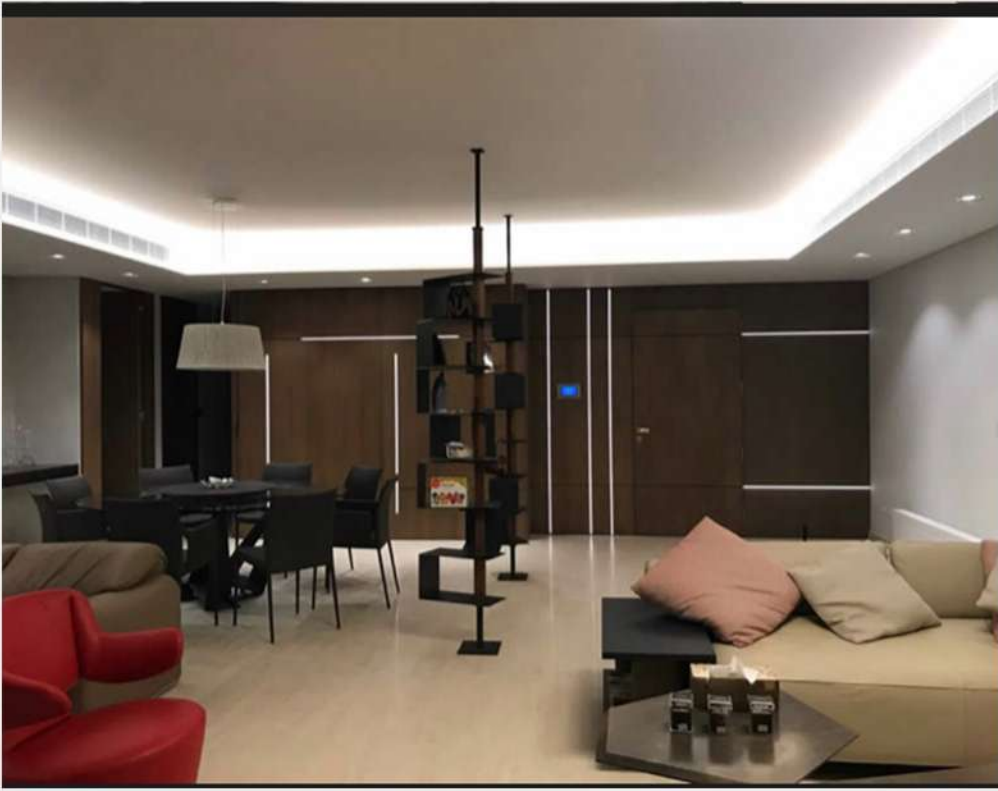
ARCHITECT - ALAIN G. MOUJAES

Vila Boulos - Lebanon

Private home- Beirut

Office building- Doha

Villa Delifer- Baabdat



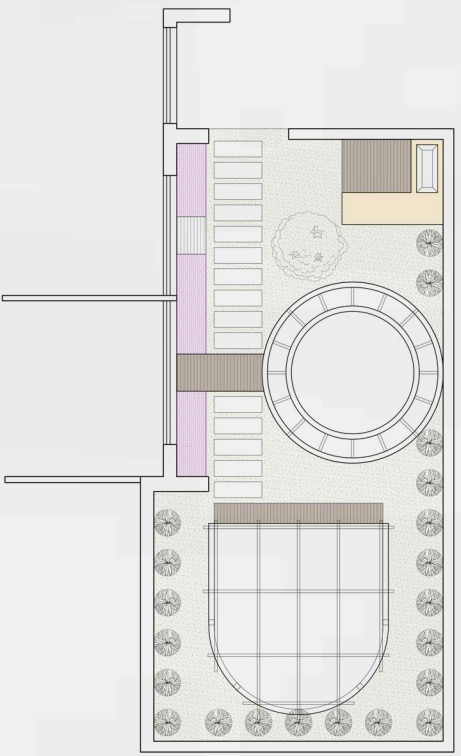
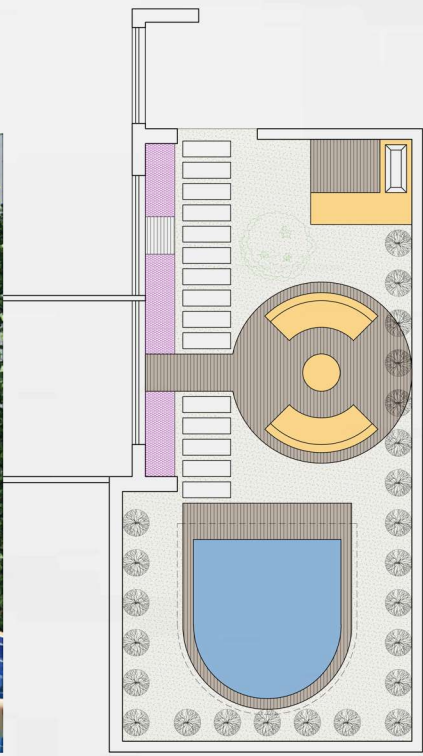
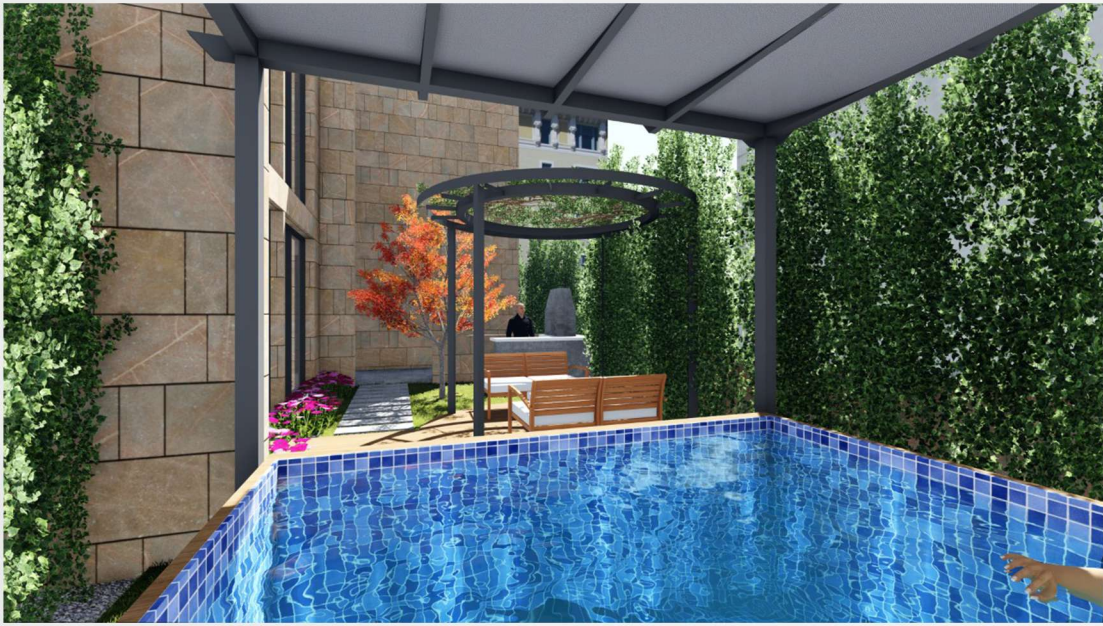
ARCHITECT - ALAIN G. MOUJAES

Restaurant - Doha



ARCHITECT - ALAIN G. MOUJAES

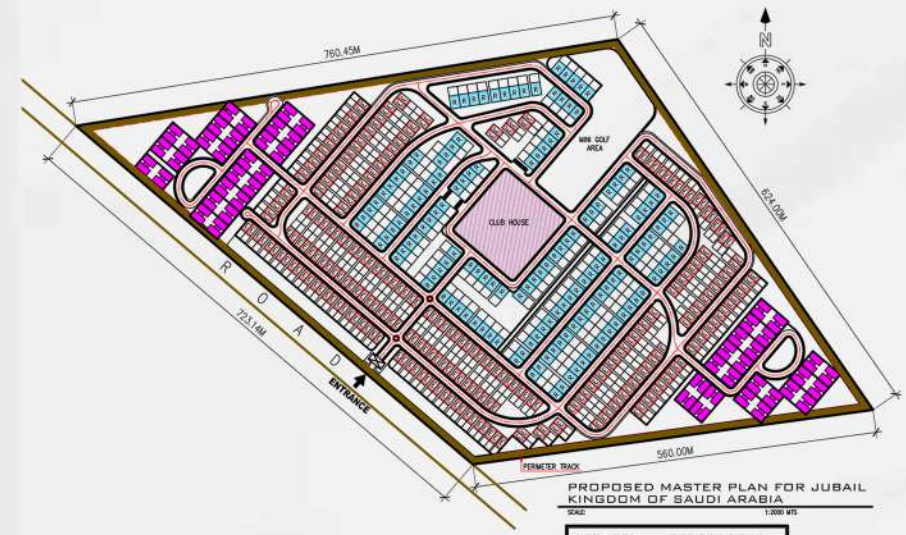
The design aimed at giving the urban living space a garden extension, allowing for a full osmosis between the indoor and outdoor areas.



ARCHITECT - ALAIN G. MOUJAES

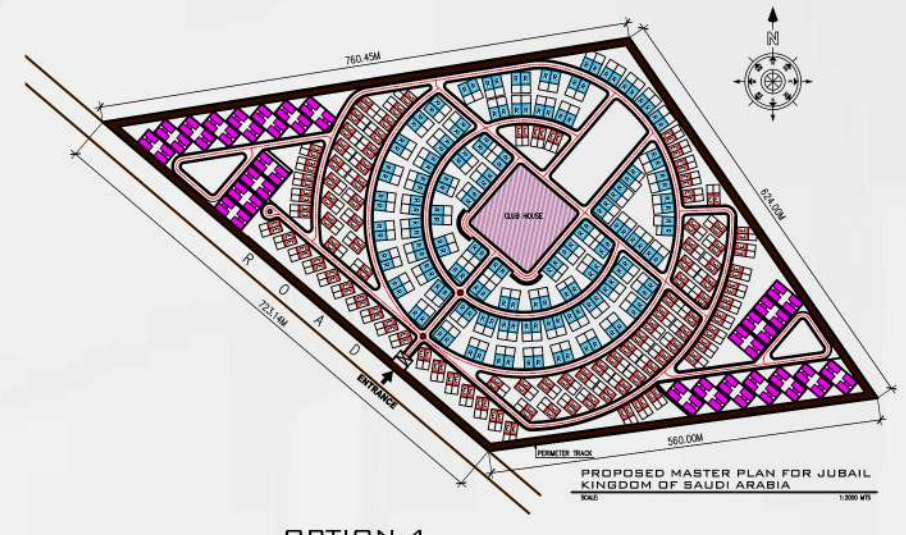
TERRACE LANDSCAPING, PRIVATE APARTMENT-DOWNTOWN BEIRUT

800 Villas compound proposal
Jubail - Saudi Arabia

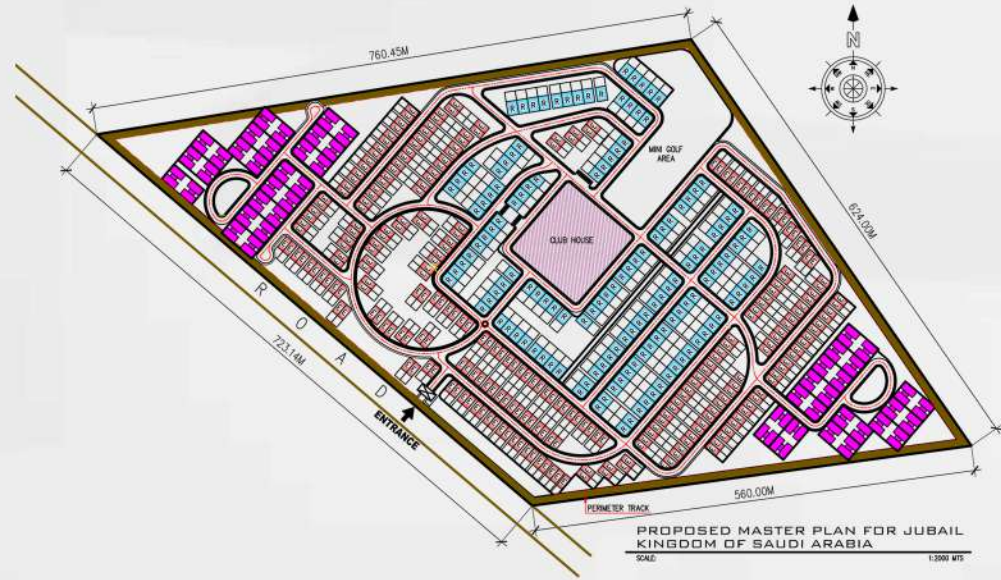


OPTION-1

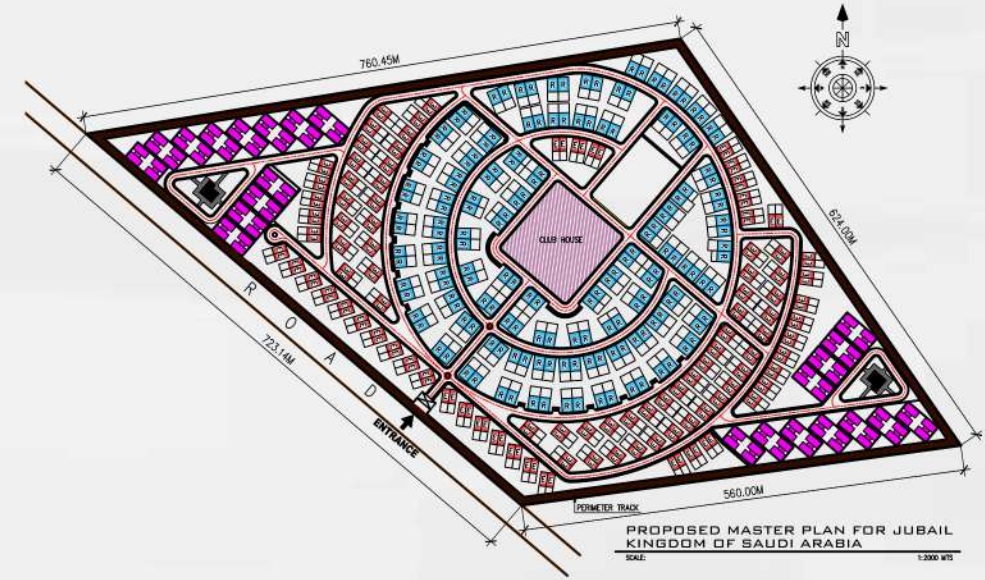
LOT AREA:	365,225 SQ.M.
VILLA TYPE R :	154 UNITS
VILLA TYPE E :	276 UNITS
3 BEDROOM FLATS :	312 UNITS



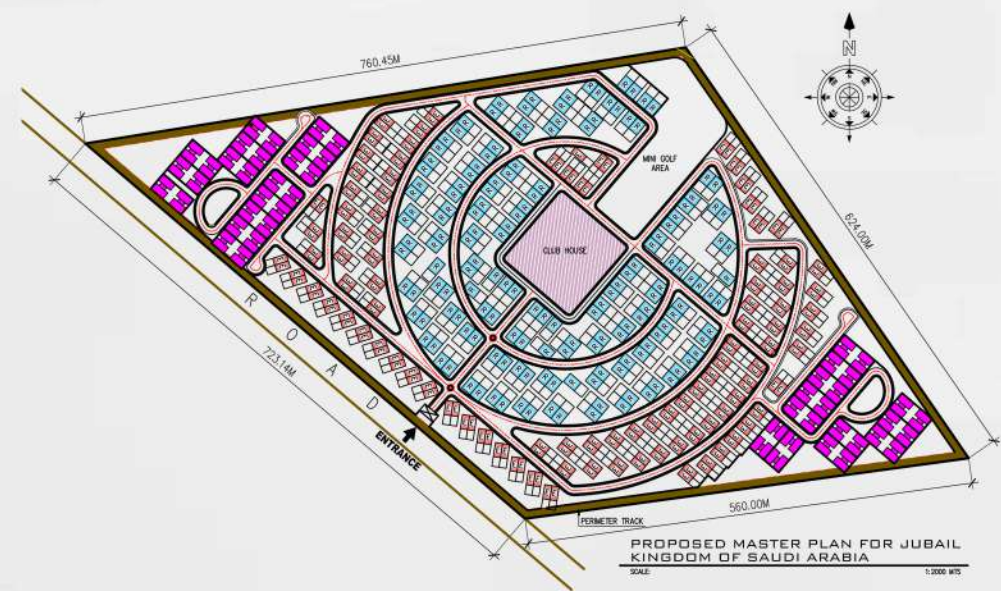
OPTION-4



OPTION-2



OPTION-5



OPTION-3



ARCHITECT - ALAIN G. MOUJAES